

# Dividing the Sheep from the Goats



Tam Fairlie

the fl@ubert duck series



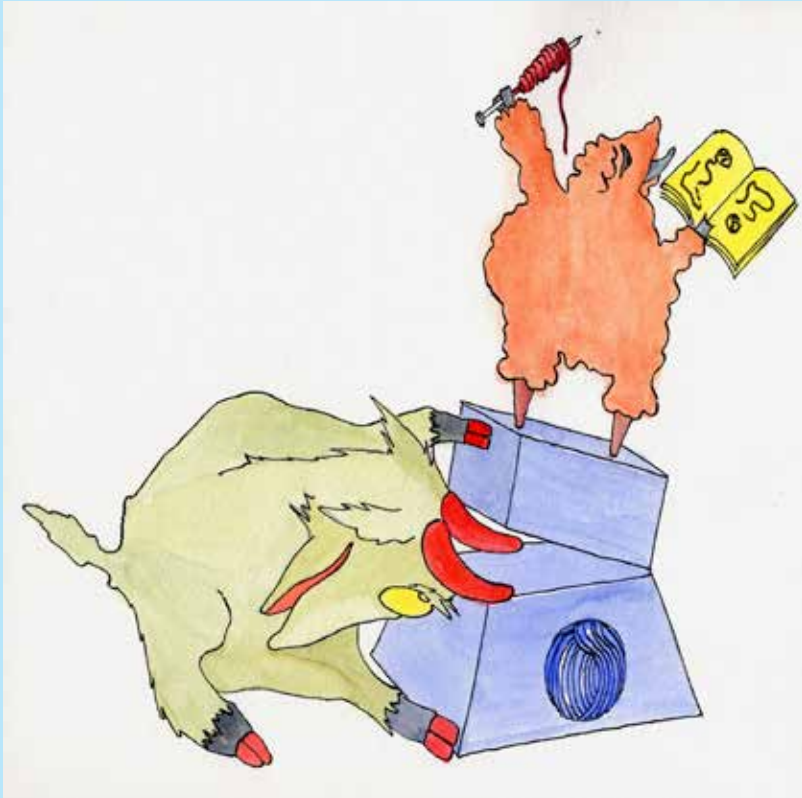
The sheep takes refuge  
in comforting ideas  
about a benign and orderly universe.



The goat  
will only reluctantly admit  
that the situation is  
not quite as bad as she thought.



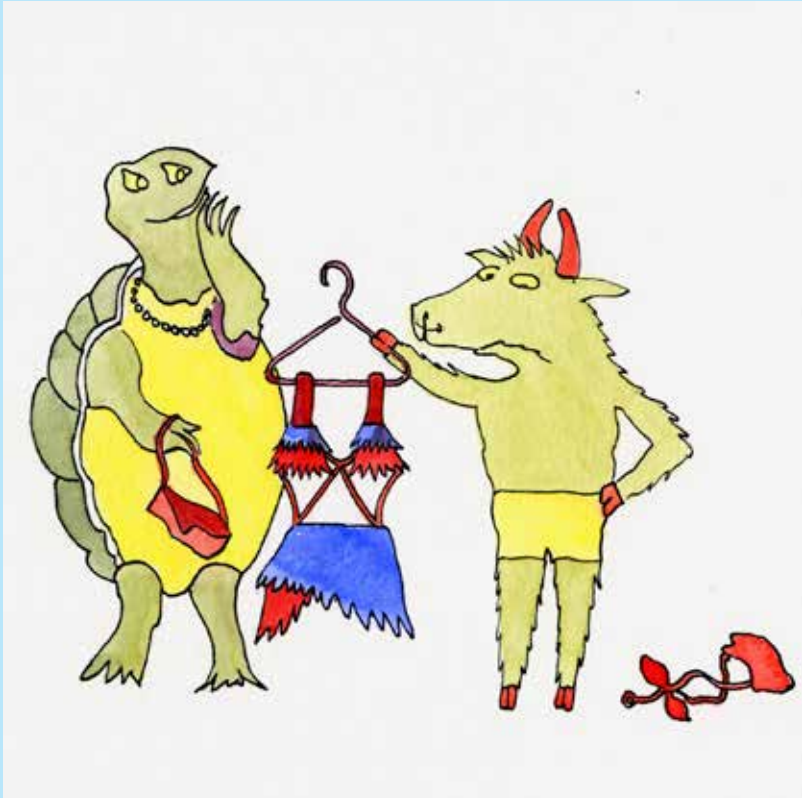
For hours the sheep may stare placidly at an inspiring view.  
She draws close around her a comforting fleece.



But the feckless goat  
will try to insert a little horn  
into any comfortable illusion  
just to test its validity.



The sheep  
may be easily fleeced.  
Her acuity in worldly transactions  
is not to be relied upon.



Few would attempt to fleece  
the perspicacious goat

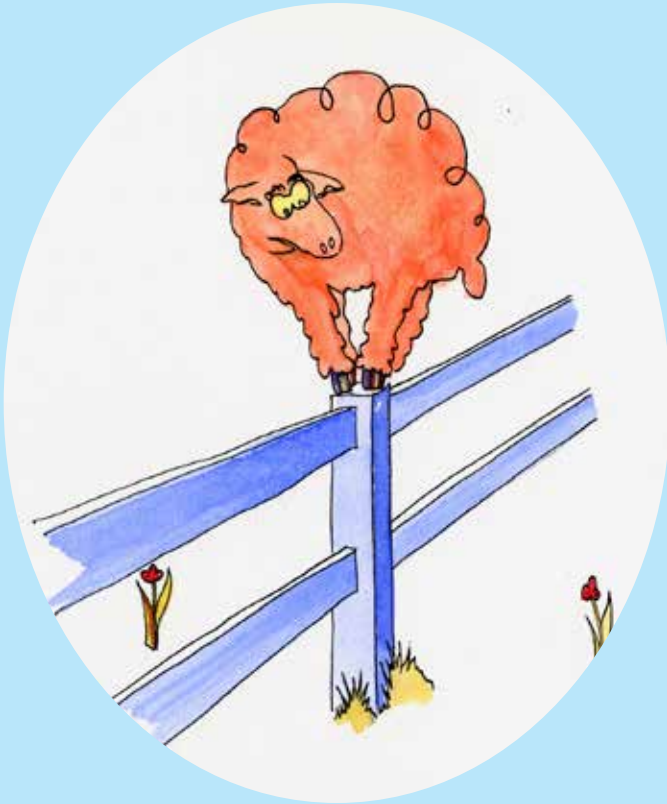


The sheep is a cautious animal  
endowed with only modest  
powers of intuition.

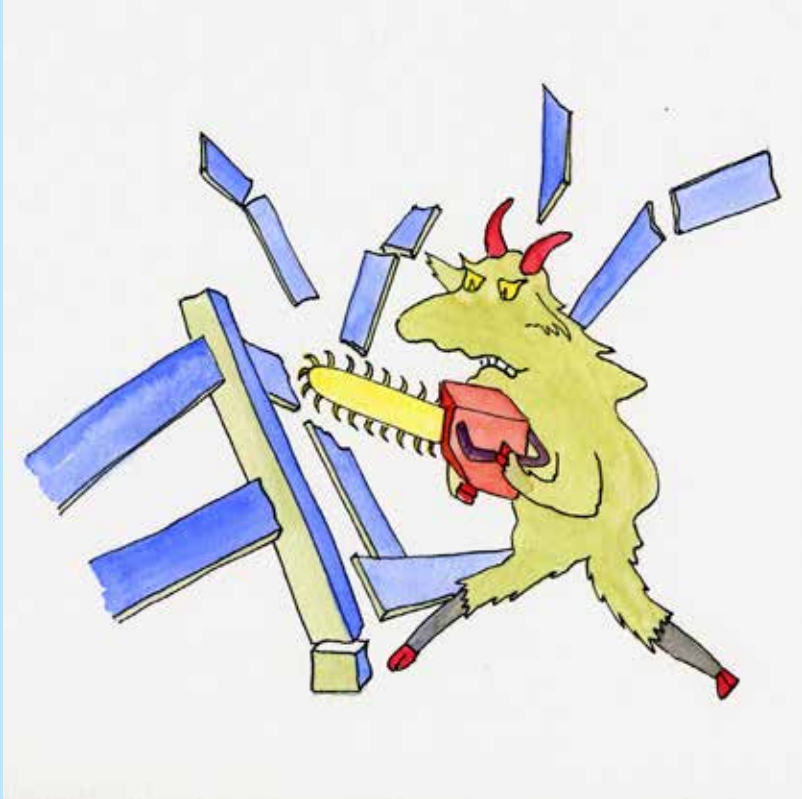




The goat  
prefers to confront obstacles head on.



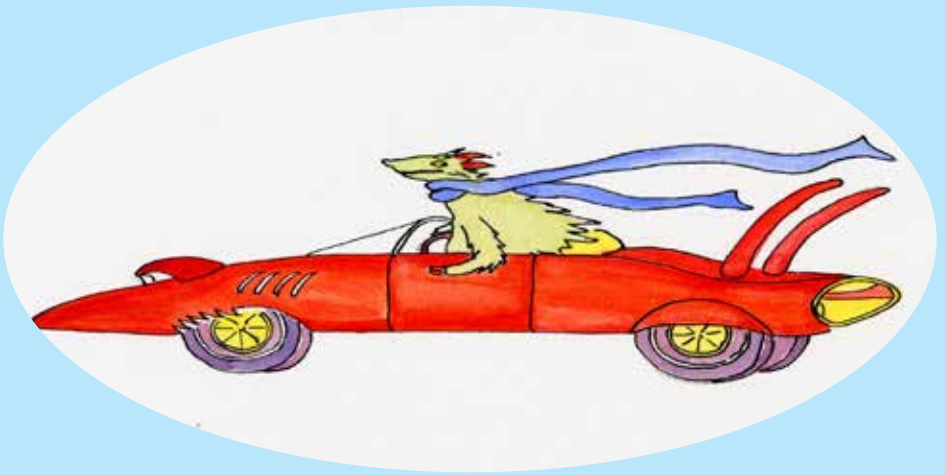
The sheep  
will ponder her options at length  
but then let fate ultimately  
decide the outcome.



The goat  
decisively removes  
all options from the beginning.



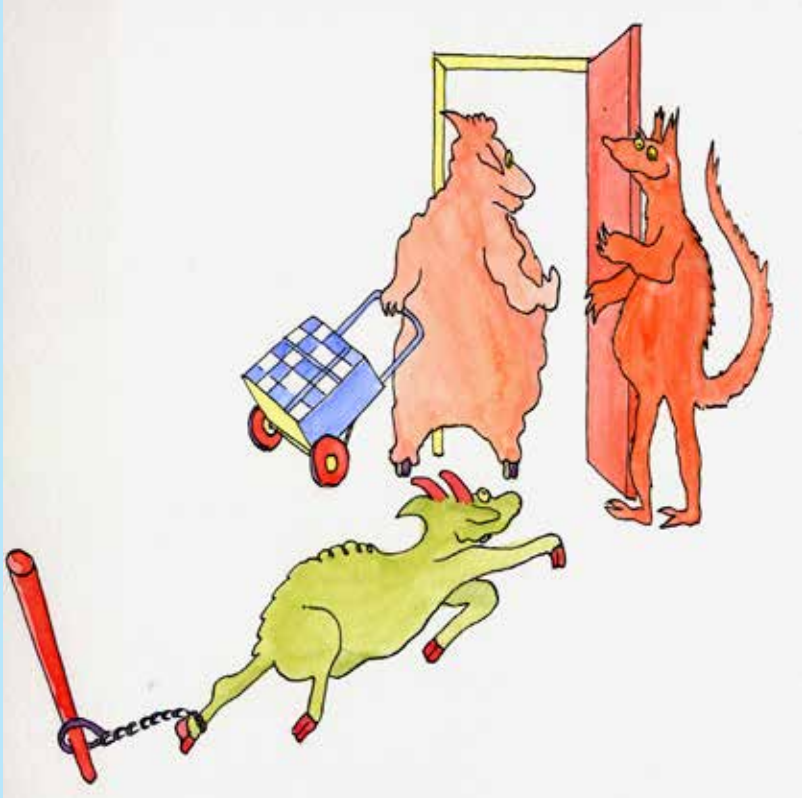
At times  
the sheep may seem  
a contradiction to the concept  
of the *survival of the fittest*.



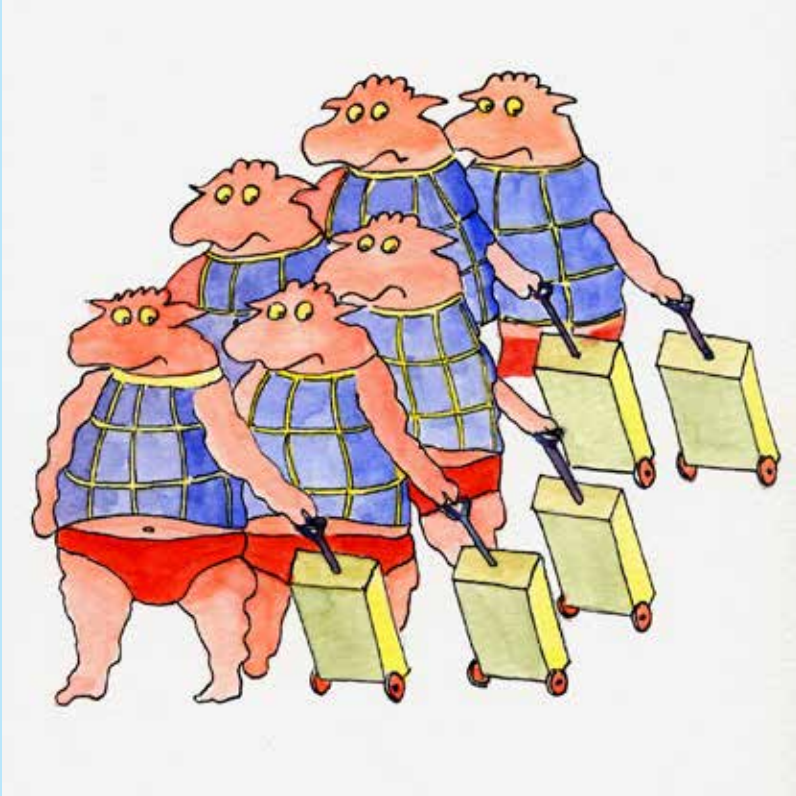
The goat is never particularly interested in  
the fittest solution.



The radical sheep is uncommon  
and ususally short-lived.  
The conservative goat  
is unheard of.



A sheep is welcome  
in every marketplace.  
But the goat is usually left  
tethered outside.

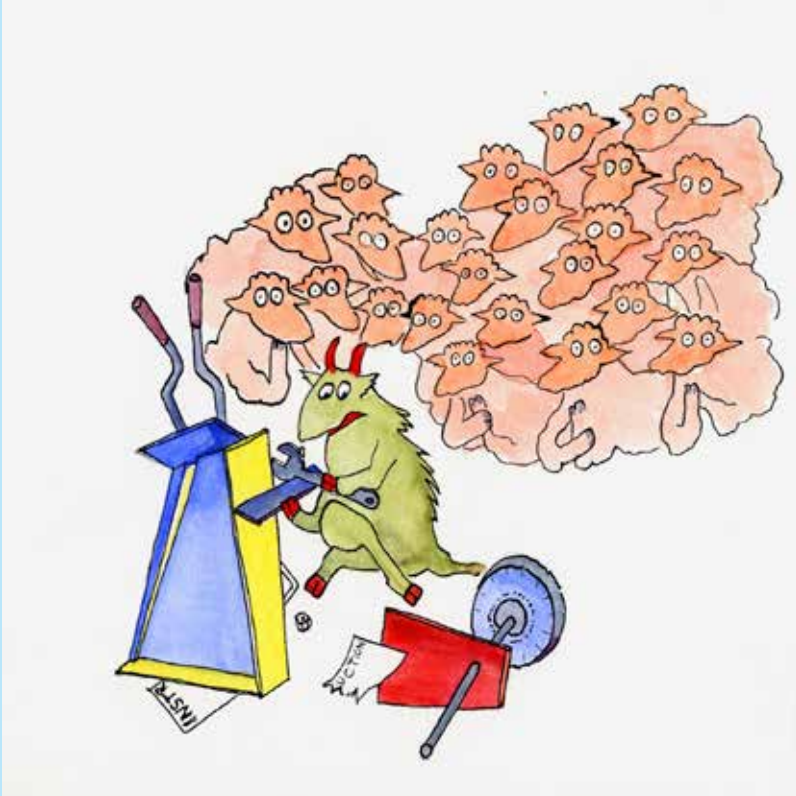


Sheep holiday in New Zealand,  
where they enjoy large social gatherings.



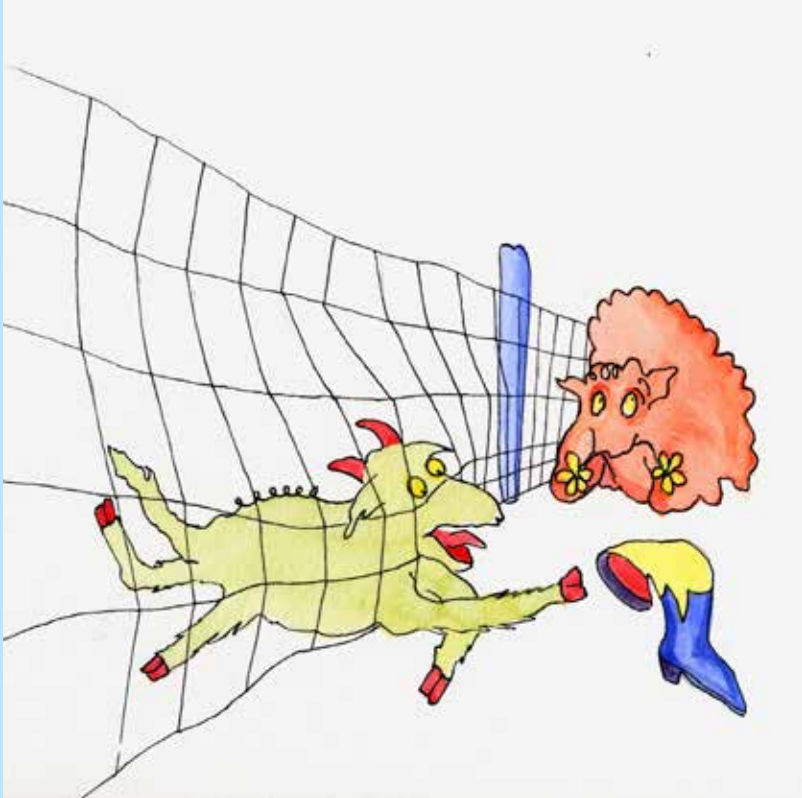


The goat  
has a predilection instead  
towards solitary adventure sports  
on remote peaks.



Sheep are susceptible to bossy ringleaders.

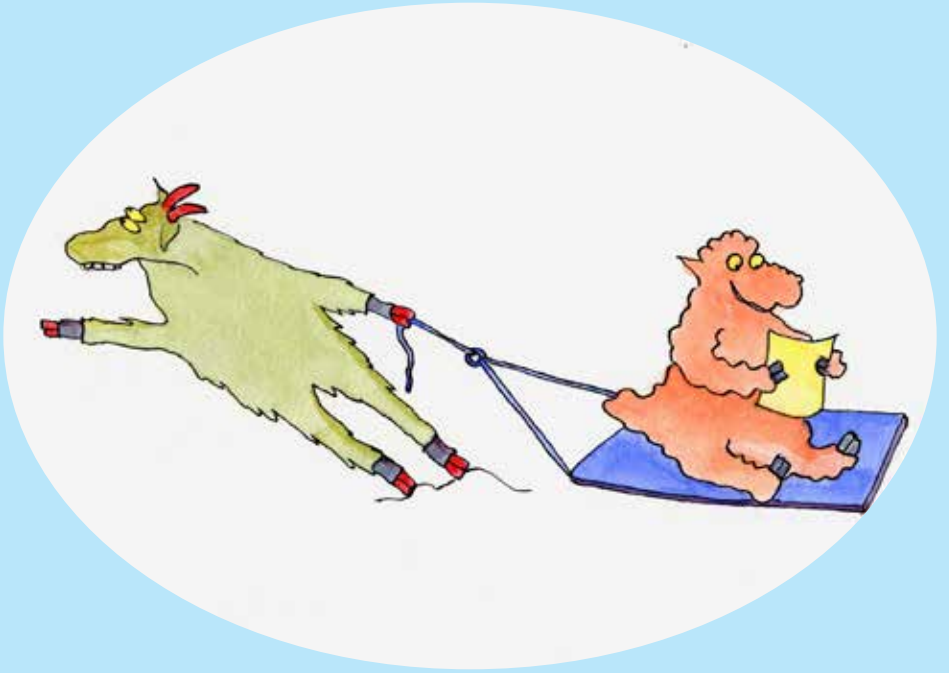
On principle the goat  
always acts contrary to instructions given.



The sheep is usually engaged in affairs close at hand  
- with so much to do and so little time.  
The goat however, exhibits a peculiar attraction  
to an old boot that is just out of reach  
on the other side of the fence.



The sheep has little interest in crossing bridges  
or in metaphysical concepts of transition.  
But when it comes to bridges  
the goat's pyromaniac tendencies flare up.



The sheep  
may seem a reluctant playmate,  
but the goat  
is drawn compulsively to anything that looks fun.



Beware of false prophets,  
which come to you in sheep's clothing,  
but inwardly they are ravening wolves.



Though goat garb has little allure.



About little problems  
the sheep will bleat.





Leaving the goat to emote!



*... and on which side  
of this great divide  
are you*

**?**



*for my favorite sheep*

*and goat*

*with Love*



Finis

